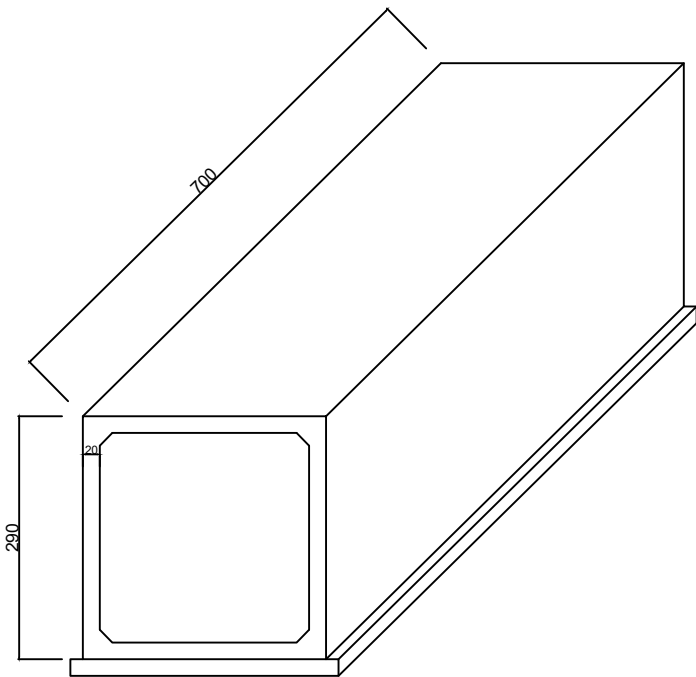
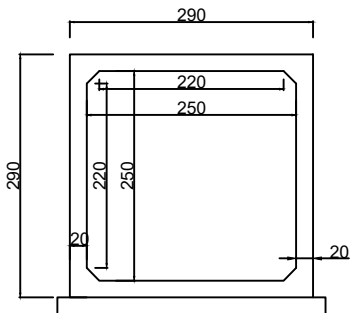


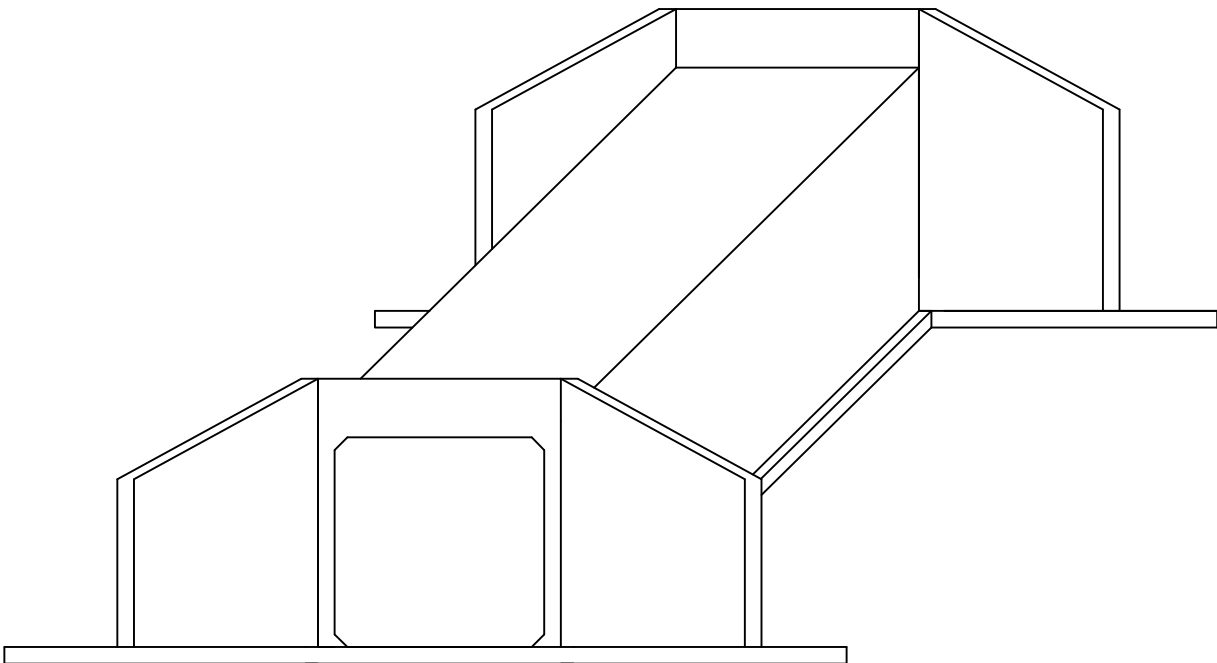
DETALHE  
ADUELA



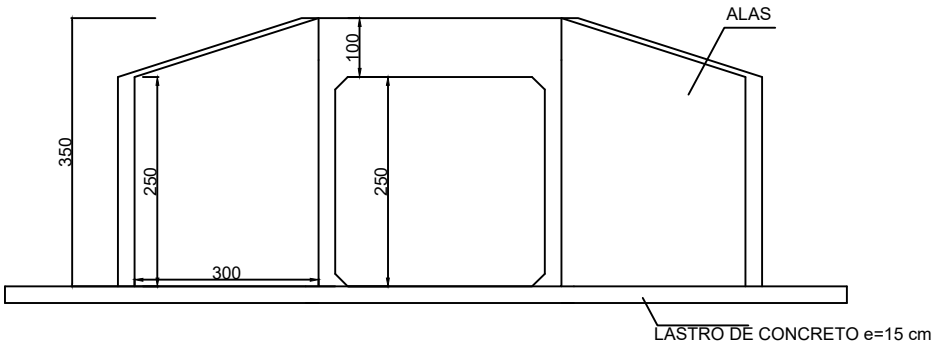
DETALHE  
ADUELA



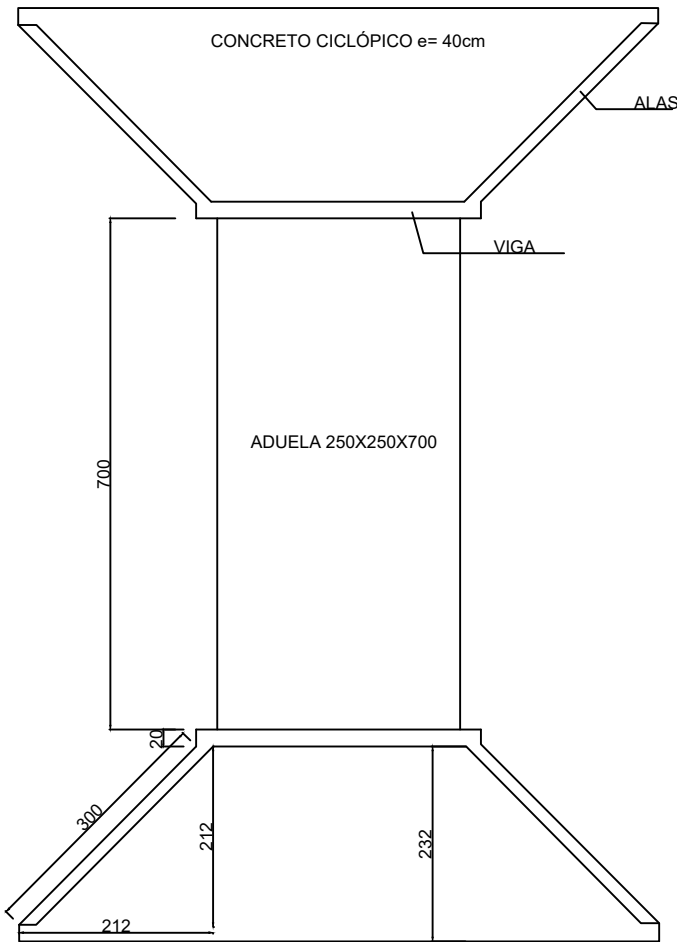
DETALHE



DETALHE  
"CABECEIRA"



PLANTA



PREFEITURA DE CHAPADA DOS GUIMARÃES

SECRETARIA MUNICIPAL DE INFRAESTRUTURA

ASSUNTO: BUEIRO SIMPLES CELULAR DE CONCRETO  
250X250 cm

OBRA: SUBSTITUIÇÃO DE PONTE POR ADUELAS

LOCAL: Córrego Buriti (Fazenda Nova)

AUTOR DO PROJETO: \_\_\_\_\_  
ENG. DAYNA APARECIDA DA SILVA - CREA - MT 49.331

COORDENADAS:  
15° 7'19.47"S 55°58'30.64"W

DATA: AGOSTO/2021

ESCALA: S/E

DIMENSÕES: 250X250X700 cm

VISTO:

FOLHA:

DESCRIÇÃO:  
LAYOUT

03/04